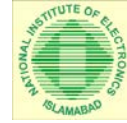




NATIONAL INSTITUTE OF ELECTRONICS
Ministry of Science & Technology
Government of Pakistan
17, H-9, Islamabad



Tel: 051-9265009-13(Ext: 217)

Fax: 051-9265027

TENDER NO. 01/2023-24/NIE
ESTABLISHMENT OF FABLES CHIP DESIGN INCUBATOR CENTRE (FABCI) FOR
SCDFC&NE LAB UNDER PSDP PROJECT "SEMICONDUCTOR CHIP DESIGN
FACILITATION CENTRE AND NETWORK ESTABLISHMENT"

S. #	Description	Covered Area	Lump sum Cost
A	ICT ALLIED INFRASTRUCTURE WORKS FOR SETTING UP INCUBATION FACILITY		
1	<p>Provision and laying/ fixation of ducting and cabling for electric, telephone and internet in incubation hall with following details:-</p> <p>Location: 3rd Floor of BMR Building</p> <p>Quality/ Scope of Work:</p> <ul style="list-style-type: none">- Cat-6 Ethernet Cable.- Electric Cable: 3/29 and 7/29- Good Quality Electric/ Networking Face Plates- Main Hall connectivity with main generator placed at backside of Main Block of NIE Building- With installation <p>Note:- All points will be made/ finalized by the concerned Project Director (PD)</p>	100 points Approx	
2	<p>Partitioning and Paneling work in Incubation Facility with following details:-</p> <ul style="list-style-type: none">- Aluminum and Glass (Transparent or frosted) Partitioning (Aluminum gauge: 1.2mm or above and glass thickness: 5mm or above), Area: 850 Sq/ft Approx as per following:<ul style="list-style-type: none">✚ Aluminium partitioning: up to 2',5" at bottom, remaining area will be glass fitted with aluminium frame✚ Fixation of Aluminium doors with good quality/ latest designed of door closers; door opener handles and locks as per requirement.- Wooden Partitioning, Area: 200 Sq/ft Approx- Panel Carpet Flooring: thickness: 6mm or above, Area 3500 Sq/ft Approx	Complete Job	

	<ul style="list-style-type: none"> - Vertical blinds for windows, Area: 345 Sq/ft Approx - Provision of wooden book shelf/ case by means of sliding or fixed front door with Deco Paint (Length: 5', Width: 4' and Depth: 1' (Total: 03 Nos.)) <p>Note: Quality, Design and Color will be approved by the concerned PD</p>		
3	<p>Paint with material and labour in Incubation Facility with following detail:</p> <p>Area: 3000 sq/ft (Approx)</p> <ul style="list-style-type: none"> - Filling up whole area with wall putty and raigmal for surface smoothness , Make: Burger or equivalent - Two Coats of Paint, Make: ICI/ Burger or equivalent <p>Note: Quality and Color will be approved by the concerned PD</p>	Complete Job	
4	WORKS/ JOBS UNDER UTILITIES/ CABLE INSTALLATION FOR INCUBATION		
a	<p>Provision and fixation of light panels with following specifications/ detail:</p> <p>Make: OSAKA or Equivalent</p> <p><u>Specifications:</u></p> <ul style="list-style-type: none"> • 2 ft x 2 ft • Panel light • White / warm light • One year warranty <p>Note: Place of installation will be communicated by the concerned PD</p>	30 Nos.	
b	<p>Provision and fixation of ceiling lights with following specifications/ detail:</p> <p>Make: OSAKA or Equivalent</p> <p><u>Specifications:</u></p> <ul style="list-style-type: none"> • Warm and white Color • Multi-sizes as per holder fitting/ design <p>Note: Place of installation will be communicated by the concerned PD</p>	50 Nos.	
c	<p>Provision and fixation of ceiling fans with following specifications/ detail:</p> <p>Make: Pak Fans or Equivalent</p> <p><u>Specifications:</u></p> <ul style="list-style-type: none"> • Size: 18" • Pure Copper Wire 	10 Nos.	

	<ul style="list-style-type: none"> • Built-in Grille Controlling System with Remote • One year Warranty <p>Note: Place of installation/ fixation will be communicated by the concerned PD</p>		
d	<p>Provision and installation of Projector Screen with following specifications/ detail:- Make: Local/ Imported</p> <p><u>Specifications:</u></p> <ul style="list-style-type: none"> • Size: 8' x 6' • Motorized Operation • Good quality <p>Note: Place of installation/ fixation will be communicated by the concerned PD</p>	01 No.	
e	<p>Provision and Fixation of Customized Panaflex with digital Sticker Design as per following detail:-</p> <p>Make: Local/ Good Quality</p> <p>Note:- Size, content of text and design will be communicated by the concerned PD</p>	Complete Job	
f	<p>Provision and installation of Electric Water Geyser with following specifications/ detail:-</p> <p>Make: NASGAS or Equivalent</p> <p><u>Specifications:</u></p> <ul style="list-style-type: none"> • Tank Capacity: 15 Gallon • 2000W Imported steel element • Rotary Thermostat, Anti scaling Rod • Heavy Gauge galvanized tank • Special glass wool insulation • Heating capacity 15 gallon per Hour • Safety Valve and Gauge meter • Complete installation with Plumbing and Civil Work <p>Note: Place of installation/ fixation will be communicated by the concerned PD</p>	01 No.	
g	<p>Provision of indoor plants with pots as per requirement of incubation facility</p> <p>Note: Category of plants and design/ color of pots will be communicated by the concerned PD</p>	Complete Job	
5	FURNITURE ITEMS FOR INCUBATION FACILITY		
a	<p>Wooden Conference Table with following specifications:-</p> <p>Make: Local/ Imported</p>	01 No.	

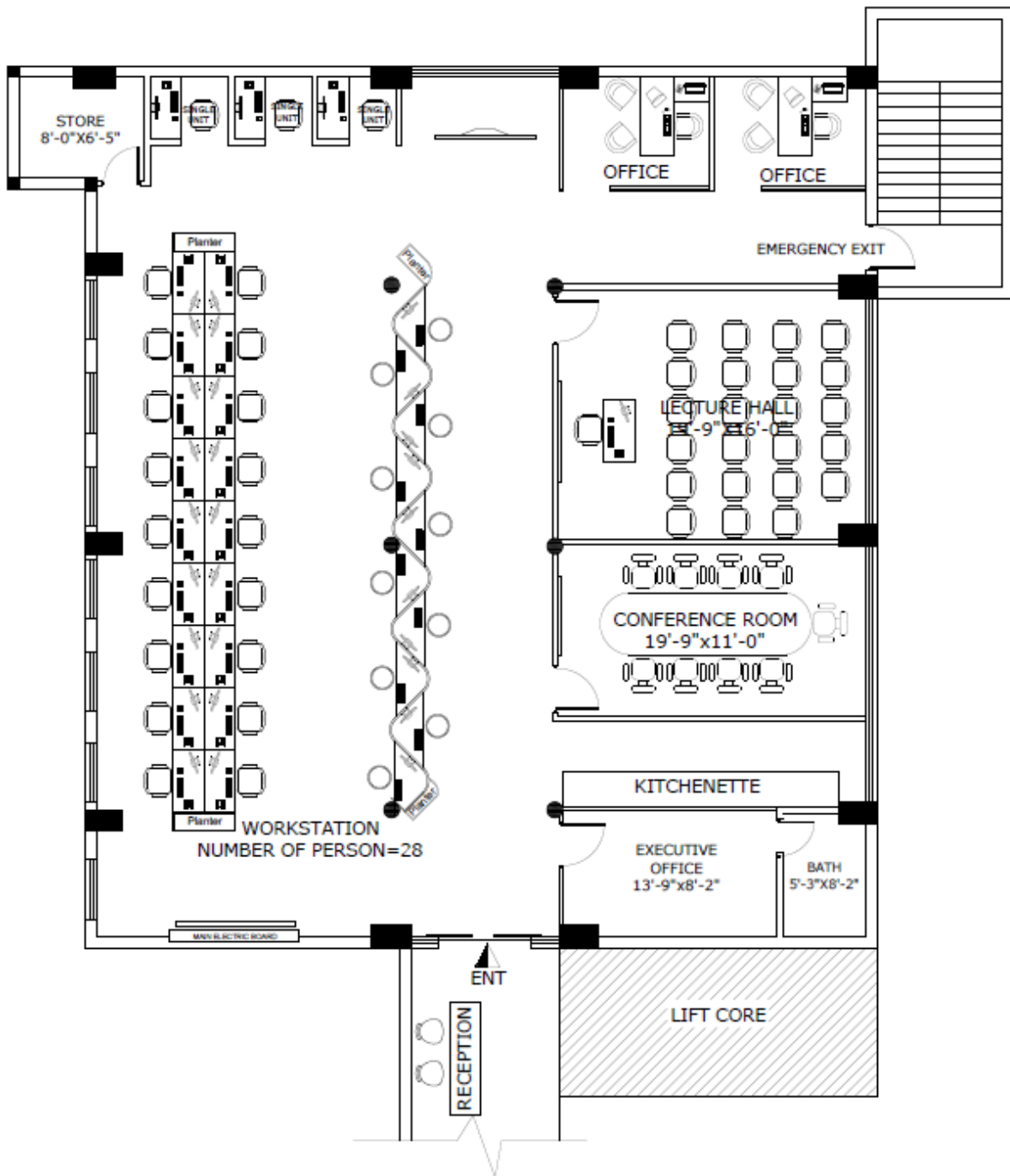
	<p><u>Specifications:</u></p> <ul style="list-style-type: none"> • Good quality • Size: Length =12ft, Height=2.6ft, Width=4ft • Wooden laminated sheet with power and internet sockets • Water/ Dust Proof. 		
b	<p>Conference Chairs with following specifications:-</p> <p>Make: Local/ Imported</p> <p><u>Specifications:</u></p> <ul style="list-style-type: none"> • Revolving, Height Adjustment • Fixed Arm Rest • Comfortable Low Back • Imported Quality, • Black Color 	16 Nos.	
c	<p>Customized Workstation Tables with following specifications:-</p> <p>Make: Local</p> <p><u>Specifications:</u></p> <ul style="list-style-type: none"> • Wooden Laminated High Gloss Sheet • Iron/ Aluminum Frame as per design. • Table Size: Length =8ft, Width=4ft, Height=2.6ft • Power and Internet Sockets. • Glass Separation • Customized Designs 	08 Nos.	
d	<p>Fixed Workstation Tables with following specifications:-</p> <p>Make: Local</p> <p><u>Specifications:</u></p> <ul style="list-style-type: none"> • Wooden laminated high gloss sheet • Table Size: Length =7ft, Width=4ft, Height=2.6ft • 03 Drawers 	10 Nos.	
e	<p>Sofa Set by means of side and middle tables with following specifications:-</p> <p>Make: Local/ Imported</p> <p><u>Specifications:</u></p> <ul style="list-style-type: none"> • 5-Seater • Leather Finish • Side Tables: 02 Nos., Middle Table: 01 No. • Artificial decor 	03 Nos.	
f	<p>Chairs for incubates with following specifications:-</p> <p>Make: Local/ Imported</p> <p><u>Specifications:</u></p> <ul style="list-style-type: none"> • Comfortable • Revolving chair • Good Quality • Multiple color 	60 Nos.	

	<ul style="list-style-type: none"> • Fixed Arm Rest 		
g	<p>Filling Cabinet/ Cupboards with following specifications:-</p> <p>Make: Local</p> <p><u>Specifications:</u></p> <ul style="list-style-type: none"> • Wooden Cabinet • Size: Length: 16", Width: 72", Depth: 16" • Wooden Doors With Lock & Keys 	02 Nos.	
h	<p>Table for Main Reception of Incubator with following specifications:-</p> <p>Make: Local</p> <p><u>Specifications:</u></p> <ul style="list-style-type: none"> • L-Type, • Size: Front Length 7ft, Side length 5ft, Height =4ft, Width =3ft • Wooden laminated high gloss sheet with glass top • Water, dust proof, Deco paint • NIE Logo • Best Quality • Reception Wall Customized Design 	01 No.	
i	<p>Renovation of BMR Building with following detail:-</p> <ul style="list-style-type: none"> • Provision and fixation of tiles with bond at bottom border of the front of BMR Building, Make: Master/Equivalent, Area: 600 Sq/ft Approx • Repair & Renovation of "06" bathrooms as per following detail:- <ul style="list-style-type: none"> - Plumbing work: provision and fixation of sewerage and drain pipes, taps, basin, flush tanks.etc. - Door maintenance. - "02" Coats of paint on all bathrooms and doors 	Complete Job	

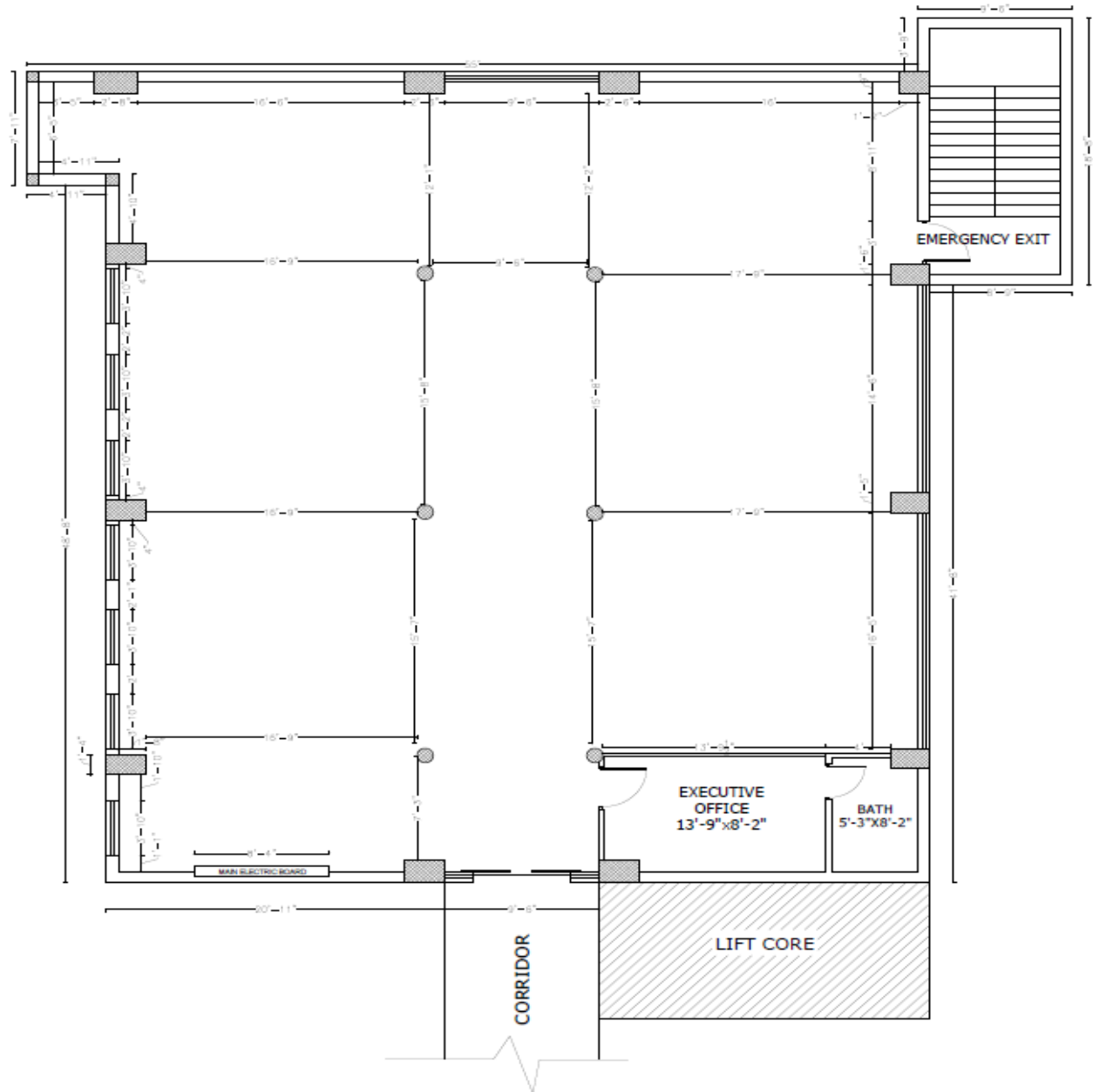
Existing Hall



Tentative Layout Plan



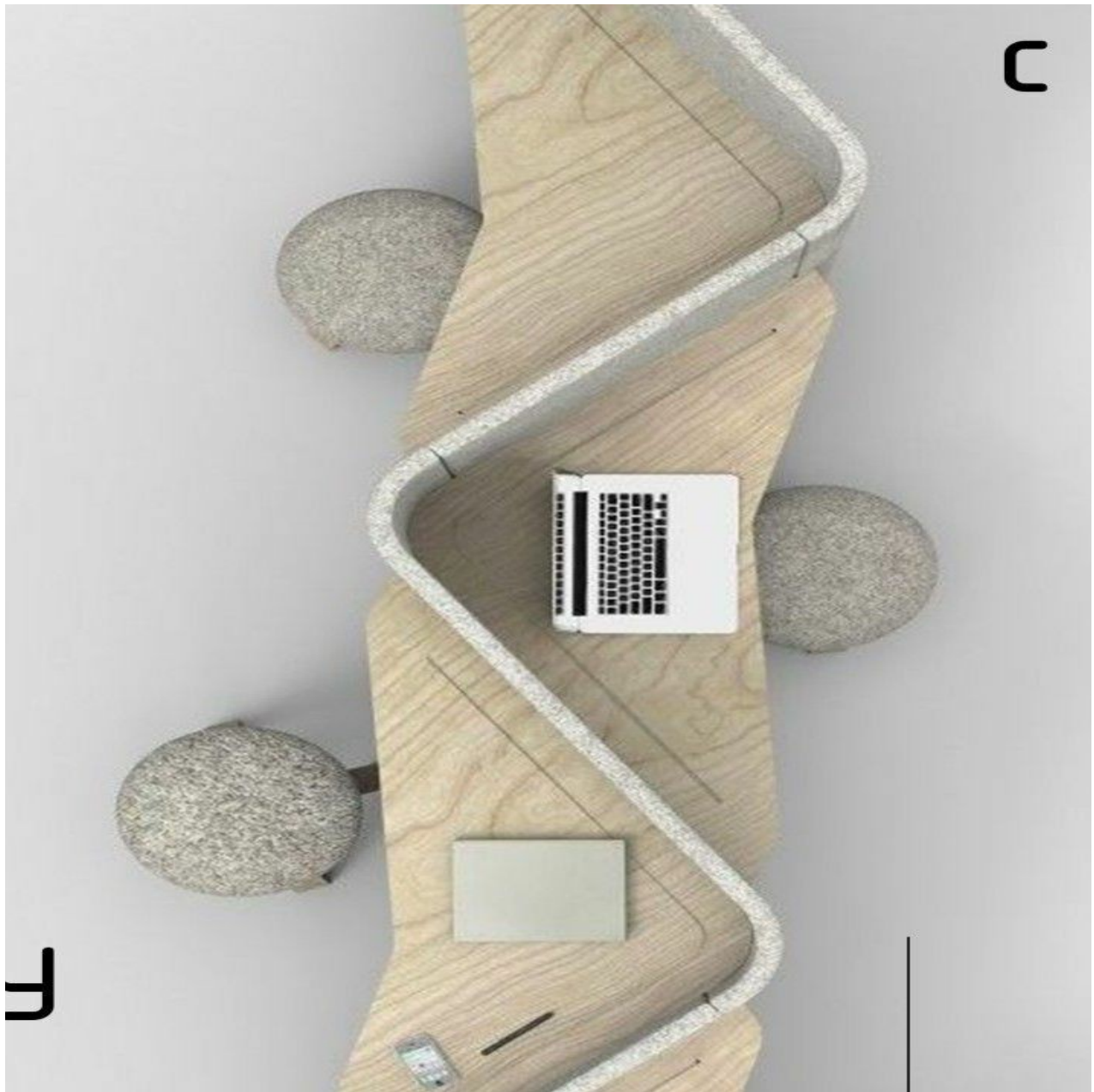
Tentative Layout Plan



Tentative Design of fixed Workstation Table



Tentative Design of customized Workstation Table





Proposed Conference Chair



Chair for incubator (Sample 01)



Chair for incubator (Sample 02)





NATIONAL INSTITUTE OF ELECTRONICS
Ministry of Science & Technology
Government of Pakistan
17, H-9, Islamabad



Tel: 051-9265009-13 (Ext: 217)

Fax: 051-9265027

TENDER NO. 01/2023-24/NIE
ESTABLISHMENT OF FABLESS CHIP DESIGN INCUBATOR CENTRE (FABSL) FOR
SCDFC&NE LAB UNDER PSDP PROJECT "SEMICONDUCTOR CHIP DESIGN
FACILITATION CENTRE AND NETWORK ESTABLISHMENT"

TERM & CONDITIONS:

1. Price to be quoted in Pak Rupees on (FOR) free home delivery basis.
2. As the facility has to be established in all respect, therefore, for competitive bidding single stage-two envelopes bidding procedure shall be adopted.
 - (i). the bid shall be comprised a single package containing two separate envelopes, containing separately **"TECHNICAL PROPOSAL"** and **"FINANCIAL PROPOSAL"**.
 - (ii). the envelope shall be marked as **"TECHNICAL PROPOSAL"** and **"FINANCIAL PROPOSAL"** in the bold, properly sealed and with legible letters to avoid any confusion.
 - (iii). initially the envelope marked with **"TECHNICAL PROPOSAL"** shall be opened.
 - (iv). the envelope marked with **"FINANCIAL PROPOSAL"** shall be retained in the custody of NIE without being opened.
 - (v). upon evaluation of technical proposals, NIE shall publically open the financial proposal of the technically accepted bids only. The financial proposal of the bids found technically rejected shall be returned un-opened to the respective firms.
3. Make, Quality, detailed specification of items/ material must be mentioned in the Technical/ Financial proposal.
4. The bidder should have experience of similar nature of work for a period of minimum **"03"** years.
5. List of client/ detail of similar work already undertaken must be furnished with Technical and Financial Bids.
6. Bids should be submitted on the letterhead of the firm, duly supported with necessary literature/ catalogue indicating make, model, country of origin in respect of offered goods.
7. The bids of the firm operating from their residential address and P.O. Box number will not be considered.
8. Tender number must be specified on the left corner of the tender envelope.
9. The rates should be valid for at least **"90"** days from the tender opening date.
10. The offered material must be brand new of the original manufacturer and covered under normal warranty/ guarantee.

11. Earnest money @ 3 % (Refundable) of the estimated cost amounting in Pak Rupee must accompany the tender in shape of a crossed bank draft/ pay order in favour of the Director General NIE.
12. Tender of all works shall be awarded to a single party being the most advantageous bid depending upon its professional capabilities and competitiveness in prices.
13. The successful bidders shall be responsible for provision of labour & material and bear all overheads and other liabilities involved in satisfactory execution and completion of the work order.
14. All material will be checked and approved by the Project Director concerned before commissioning of work.
15. There will be no compromise on quality of material and work. Materials/ work of low quality will be rejected at the cost of the successful bidder.
16. The work has to be completed with "08" weeks' time after the placement of work order.
17. The successful bidder shall have to provide 5% Performance/ Bank Guarantee of the total value of the work order for satisfactory execution of the work order. Upon submission of performance/ bank guarantee, 2% E/M of the successful bidder will be refunded. .
18. In case of late delivery/ completion in supplies, a penalty @ 2% per month of the total order value will be charged from the successful bidder without any notice.
19. The firm will keep the Project Director (SCDFC&NE) involved during every stage of the execution of the order/contract.
20. Conditional/ ambiguous bids will not be entertained.
21. **Payment in parts is not allowed. 100% payment will be made after completion of whole works, inspection and our acceptance thereof.**
22. Payment will be made on submission of the prescribed bill in duplicate through cross cheque after inspection and our acceptance thereof.
23. Income Tax/ Sales Tax etc. will be deducted from bill as per Govt. Rules.
24. NTN and GST number must be mentioned on the quotation along with providing copy of its documentary evidence, failing which bid will not be considered.
25. **Interested firms are requested to discuss the required work in detail i.e. quality/ make/ model of all items before initializing/ submitting Technical and financial proposals, failing this may cause disqualification of bid.**
26. The successful bidder will provide work plan to the Project Director concerned within "03" days after the placement of work order.
27. Last date for receipt of the tender in the office of the Assistant Procurement Officer is **January 25, 2024** up to **11:00 hours**. Tenders will be opened on the same day at **11:30 hours** in the presence of those who wish to be present. Tenders received late will not be considered in any case.
28. The Director General NIE/ Project Director concerned reserves the right to accept or reject any or all tenders in part or whole, or change the quantity of tendered items/ work.

Assistant Procurement Officer
National Institute of Electronics
17, H-9, Islamabad
Ph: 051-9265009 (Ext: 217)